



LONDON  
VISION



# Trustee Application Pack

## Contents

---

An exciting decade ahead	2
Where we come in	3
2020–2023: Getting started	4
The financials	4
Tangible work	5
Our people	7
Role summary	8
What we're looking for	9
How to apply	10

---

Supported by

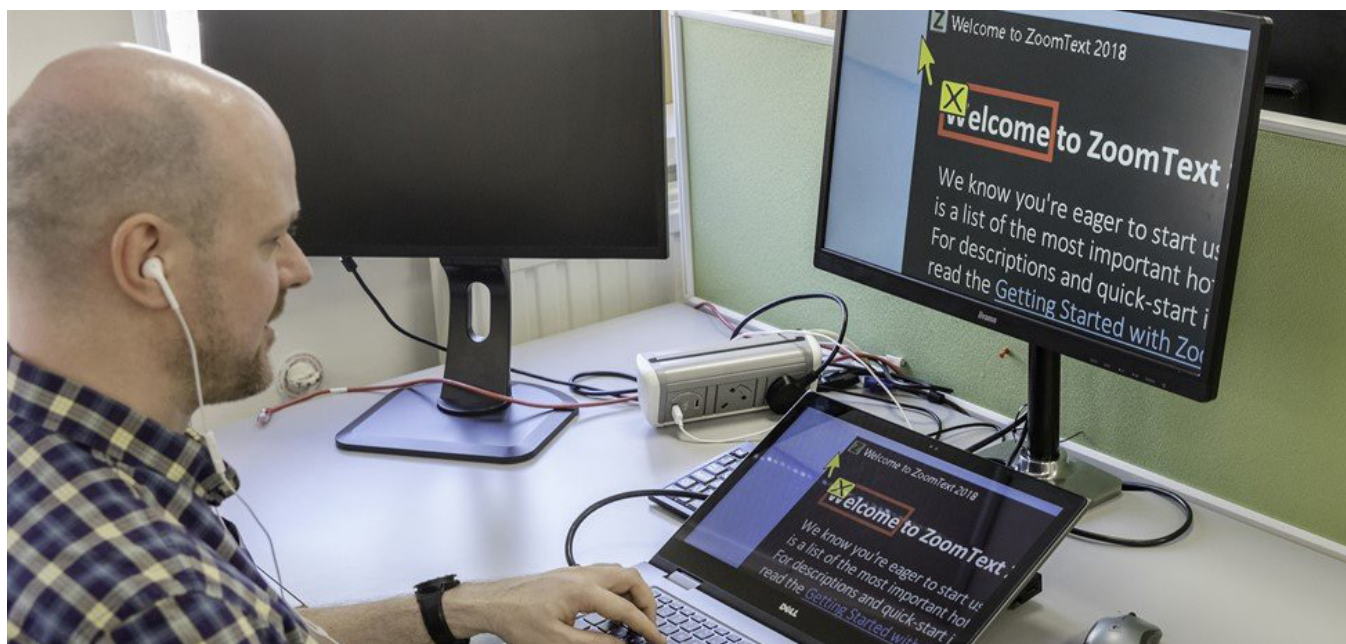


**bamboo**  
fundraising recruitment

Bamboo Fundraising  
T: 0203 750 3111

[bamboofundraising.co.uk](http://bamboofundraising.co.uk)





# An exciting decade ahead

We live in a time of rapidly evolving assistive technologies, shifting social sands, and remarkable change in the London landscape of services provided and those who provide them. The opportunity for blind and partially sighted Londoners to live the life they want to lead and for London to become an international beacon of accessibility and equality of opportunity has never been greater. However, nor has the risk of it slipping through our collective fingers if the opportunity is not grasped with both hands.



## Where we come in

London Vision is a newly established charity that takes a non-partisan, ego-free, evidence-based approach to supporting, influencing, and building capacity amongst the varied stakeholders, seeking to provide opportunities and inspiration to blind and partially sighted Londoners.

By providing cohesive leadership and a voice for blind and partially sighted Londoners on the issues affecting them, we can lobby those with the power to create real and lasting change, as well as democratising access to the latest research and information for the community-led blind and partially sighted organisations across London.

Our approach will be to create a pan-London understanding of what is available and where the gaps are, enabling our partners to implement the community-level changes needed to create coordinated change. Together, we will make London more equal and inclusive, so that people with impaired vision can take advantage of all that the UK's capital has to offer.

# 2020–2023: Getting started

Our first three years will see the rapid development of three key areas of work:

## Knowledge, information, awareness, thought leadership

Become a trusted London brand, providing information for blind and partially sighted Londoners and the organisations they interact with and rely on. By basing our communication work on the voices and lived experiences of our communities, we will become a thought leader – a trusted source of information for raising awareness and understanding by organisations, the media, and other stakeholders – driving inclusivity and equality in London.

## Communities and connections

Become a trusted partner for the societies and user-led organisations across London who support our communities, connecting and supporting them in order to amplify the progressive trend across the capital and become greater than the sum of their parts.

Only by harnessing the power of the blind and partially sighted community and their institutions – with their irreplaceable organisational knowledge of the local landscape – can we hope to create a better, more accessible London. These organisations range in size and nature, but each provide a unique and representative touchpoint for the blind and partially sighted individuals in their community.

## Influencing and championing change

Become a trusted champion and campaigning partner for issues across transport, health, employment, and technology.

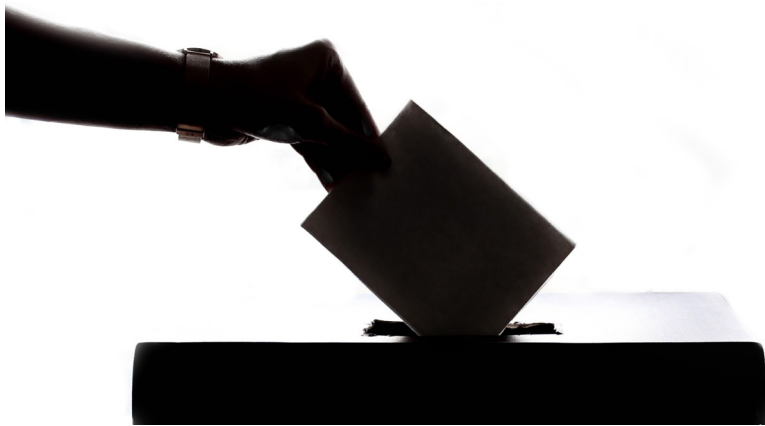
Working with NHS trusts, TFL, employers, the tech industry, and local campaign groups, we will help to drive the change that creates greater inclusivity and equality of opportunity for blind and partially sighted Londoners.

## The financials

With a generous guaranteed grant worth £1.5m over three years from the Thomas Pocklington Trust, we are in a unique position to start a project from scratch, while already being well-resourced.

# Tangible work

Alongside our overarching strategic aims, we have already started to carry out discrete pieces of work that have the capacity to effect real change and showcase London Vision's collaborative approach.



---

## Accessible Voting Campaign

London Vision's campaign around (in)accessible voting for blind and partially sighted Londoners was aimed at raising awareness around the issues faced by blind and partially sighted people when voting in elections.

Following evidence from the 2017 General Election, our campaign ensured that this issue was continually raised during the 2019 General Election by asking voters (blind and partially sighted, as well as sighted) to rate their polling stations on whether they were accessible and/or made use of accessible practices and technologies.

In practicable terms, London Vision is working with other sight loss and disability organisations to keep this issue in the public eye around the London Mayoral Elections in 2020. We also intend to work together to maintain pressure on the government around the High Court ruling.

---

**“Enabling a blind voter to mark ballot papers without being able to know which candidate s/he is voting for is a parody of the electoral process.”**

– High Court Judgement  
3 May 2019

---

**74%**

of blind and partially sighted people felt unable to vote in secret.

---

**54%**

felt that the voting was inaccessible and that new accessible ways to vote are needed.

– Report by RNIB & Thomas Pocklington Trust, 2017



## Working Age Forum

London Vision co-ordinates a network for blind and partially sighted people of working age, known as the 'Working Age Forum' (WAF). The WAF provides opportunities for people who are living with sight loss to engage with their peers for information, inspiration, and general peer to-peer support.

We host evening events throughout the year themed around various topics, such as public speaking, communicating your disability, networking as a blind and partially sighted person, and many more. These events feature a networking session where guests spend an hour over drinks discussing the evening's topic, catching up, and building personal and professional relationships that they can make use of in their wider lives.

The network also provides a bridge between our organisation and London's blind and partially sighted community, enabling members to transfer into other areas of support delivered by London Vision and its partners, such as employment support and campaigning.

## Living with Sight Loss

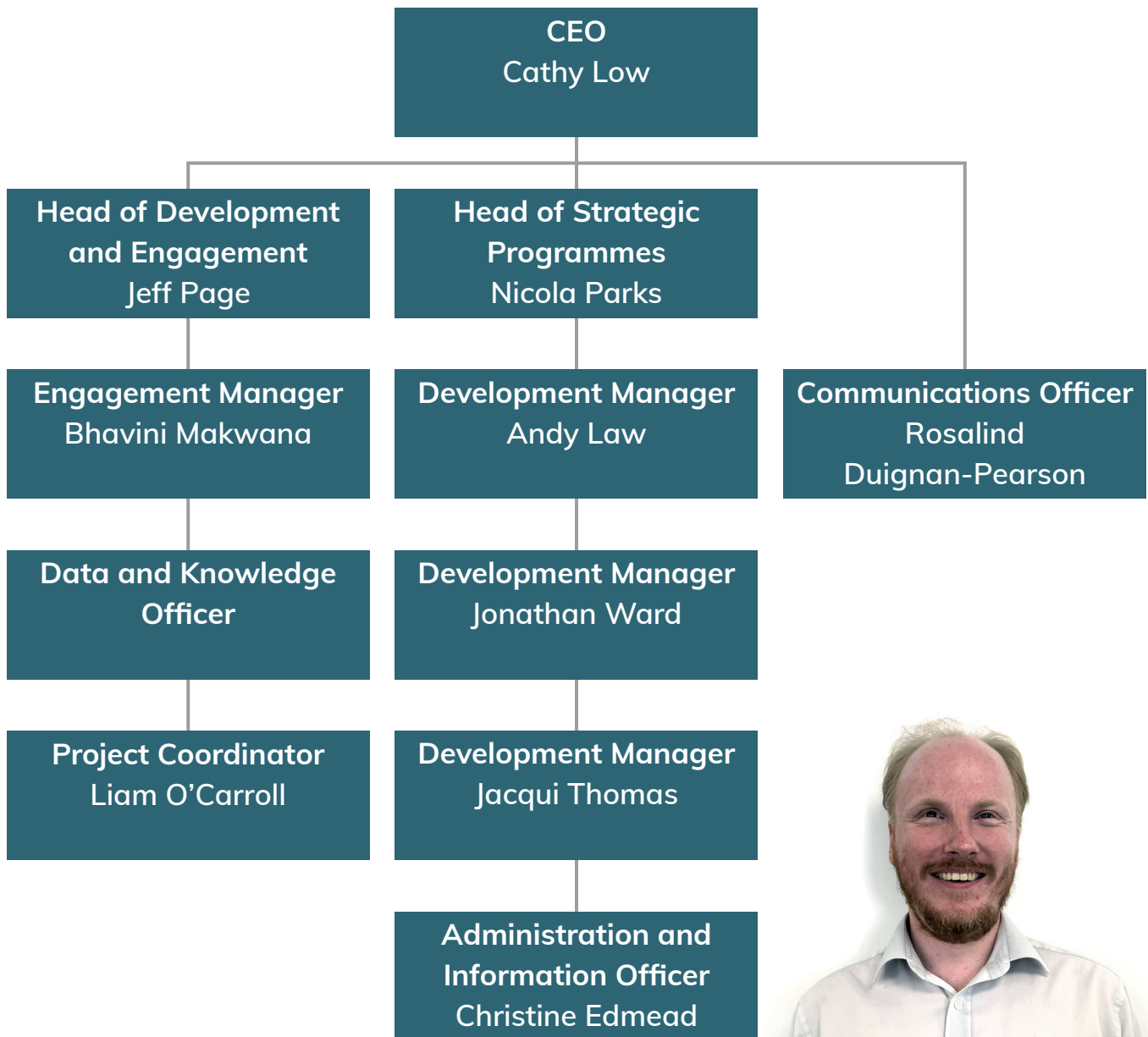
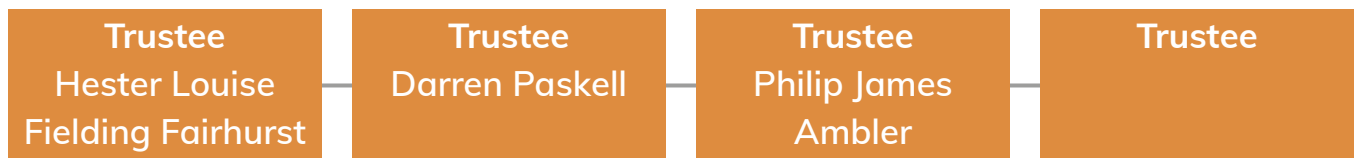
As part of an innovative pilot programme, London Vision has teamed up with RNIB, Merton Vision, and the Lewisham Sensory Team to deliver 'Living with Sight Loss' courses. The course is for blind and partially sighted adults, along with their family and friends, and is designed to be informal and informative.

Attendees learn strategies for coping with sight loss, as well as having the opportunity to meet and learn from their peers. The courses will cover rights and benefits; tips for daily living, travel, sport, leisure, and use of technology; and the emotional impact of living with sight loss. Guest speakers will help to deliver the sessions.

# Our people

With an experienced staff team already established, bringing heaps of sector experience and contacts with them, we have all the excitement of a start-up with one less headache.

## Board of Trustees





# Role summary

With an experienced staff team already established, bringing heaps of sector experience and contacts with them, we have all the excitement of a start-up with one less headache.

---

**Role:** Trustee

---

**Type:** Voluntary (unpaid)

---

**Location:** Board meetings take place in London, WC1H 9LG

---

**Commitment:** Five board meetings per year, plus attendance at fundraising events where possible.

---



## Role overview

Take part in collective responsibility for the governance, management, and leadership of London Vision, leveraging your skills, experience, and contacts to help the SMT achieve the charity's aims and objectives.

# What we're looking for

In order to effect the ambitious change we want to see across London, we need to ensure that our governance is robust and that we have a board of trustees with the skills and experience to help London Vision take advantage of the opportunities and overcome the challenges we face over the coming years.

We are looking from Londoners of all stripes who bring the following to our board:

---

## Core Skills

We are looking for candidates who are able to demonstrate each of the three core skills.

### Creative problem-solving

Believing that no problem is without solution, starting projects being certain of finding a way through, rather than disguising pessimism as pragmatism.

### Inspiring leadership

Having the propensity to inspire those you lead through your own actions, driving them to be better by always driving yourself to be better.

### Collaborative working

Understanding the importance of collaborative working in creating representative, multi-pronged solutions and having a history of implementing this in your work.

---

## Desirable Experience

We're looking for individuals who have experience across at least two of the following areas:

- Lived experience of sight loss
- Human Resources
- Finance & investments
- Organisational development
- Change management
- Fundraising
- Emerging technologies
- The London transport network
- NHS trusts
- Advocacy & lobbying
- Campaigning
- Employment programmes
- Consortium development



# How to apply

If you're interested in joining the board at London Vision, please contact our recruitment partners at Bamboo Fundraising on:

0203 750 3111

or

[graham@bamboofundraising.co.uk](mailto:graham@bamboofundraising.co.uk)